

# RX

RX 350 / RX 350h  
RX 450h+ / RX 500h





RX	03
DRIVING SIGNATURE	06
DESIGN	23
ADVANCED TECHNOLOGY	33
OTHER EQUIPMENT	39
LEXUS OWNERSHIP SOLUTIONS	49
LEXUS ENCORE	51
COLOURS AND TRIMS	52
MAIN FEATURES	54
SPECIFICATIONS	57







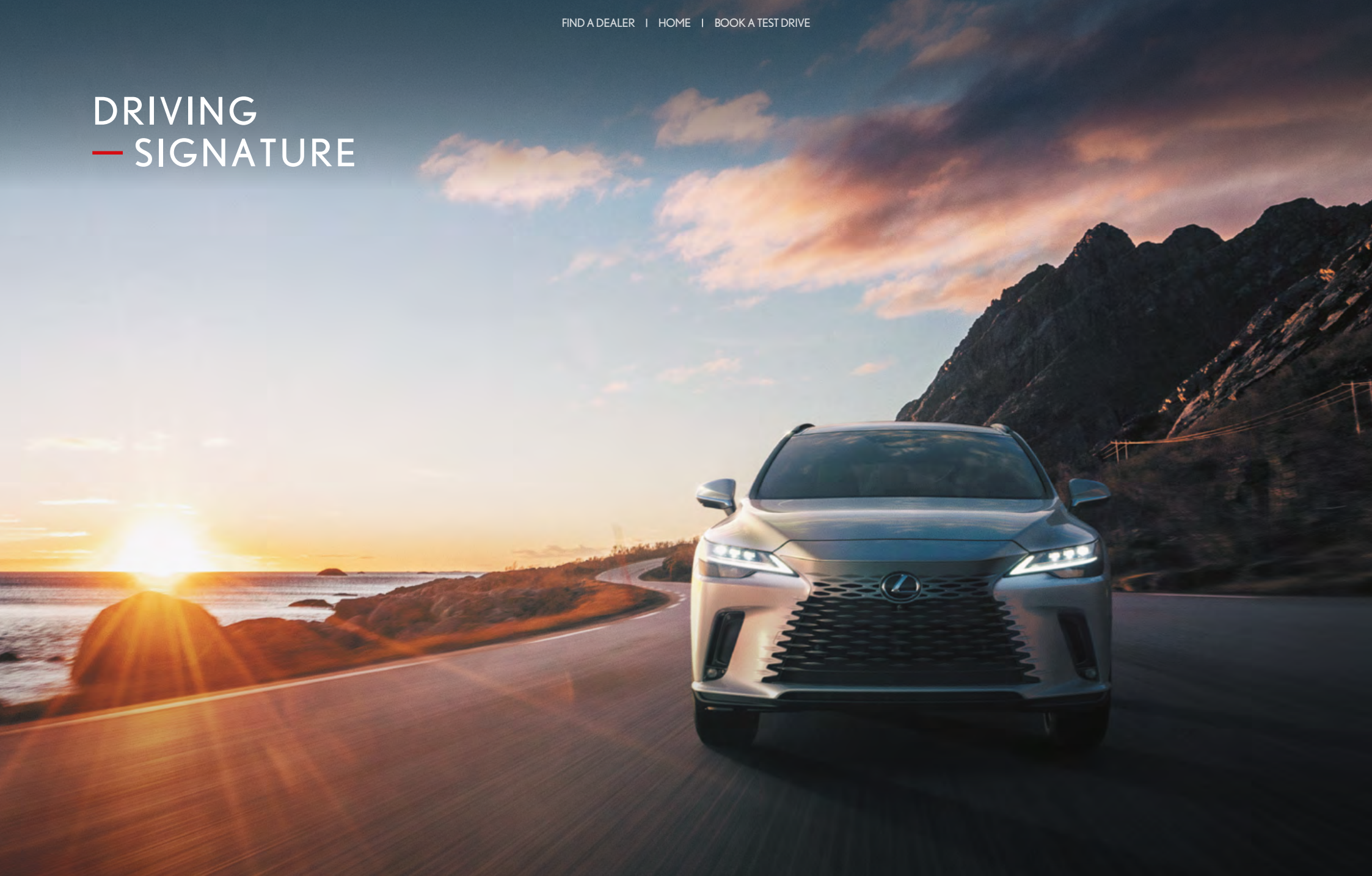








# DRIVING — SIGNATURE





## — DRIVING SIGNATURE

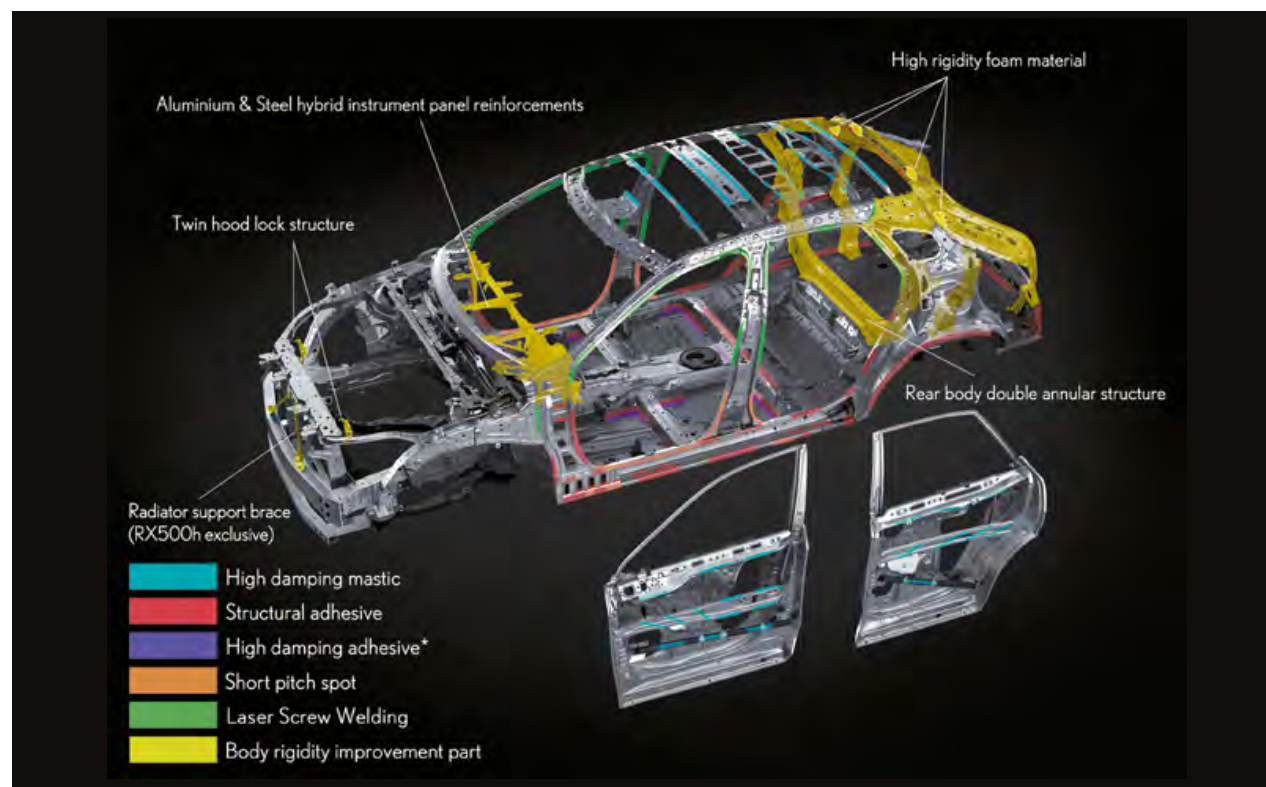
By meticulously refining performance fundamentals, the 'Lexus Driving Signature' has evolved.



The Lexus Driving Signature provides a driving experience with an exhilarating feeling of seamless acceleration, steering and braking across all driving situations. By design it aims to deliver a responsiveness, that stays true to every driver intention. The RX was evolved by carefully refining vehicle fundamentals. Including the centre of gravity, stability properties, weight reduction and chassis rigidity. At the same time, a sharp focus was applied, enhancing ride quality and quietness. Features that Lexus is known for right around the world.



## — DRIVING SIGNATURE



### Suspension/Shock Absorbers

The MacPherson™<sup>1</sup> strut front suspension and multi-link rear suspension efficiently transmit drive force to the road surface. This enables a smooth change in vehicle posture, which is most noticeable during start-up and acceleration. Vibration while driving is suppressed by optimising the positioning of the shock absorber and bushing characteristics within mounts. The shock absorbers use swing valves to help dampen force at very low speed ranges. Linear solenoid-type AVS<sup>2</sup> provides excellent dampening force response, enhancing linear driving performance and refining ride comfort. Adopting a hub bolt fastening construction also enhances high axle rigidity and reduces unsprung weight, contributing to a crisp feel when steering with clear feedback and high-quality ride comfort.

<sup>1</sup>Product and company names are trademarks of their respective owners.

<sup>2</sup>Available on F Sport, Sports Luxury and F Sport Performance models only.

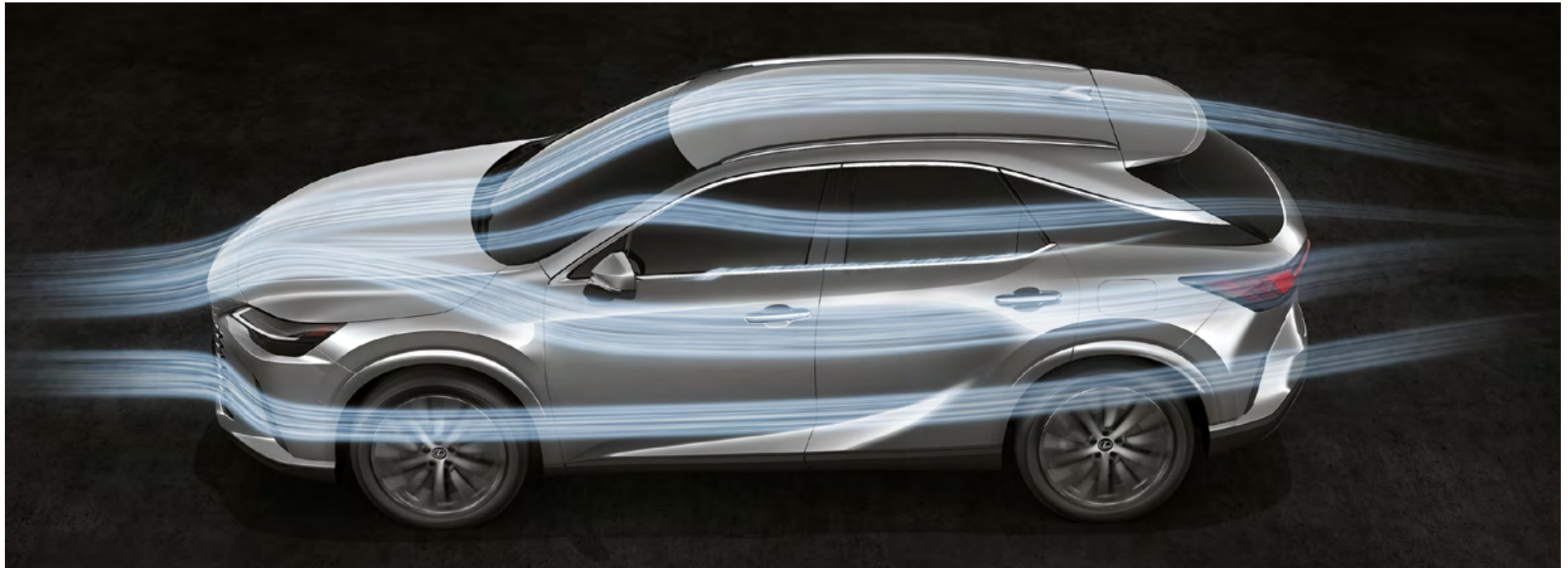
Overseas model shown. Australian specifications and features may differ. See your Lexus dealer for details.

### Body Rigidity

The rear section of the GA-K platform is specifically designed to accommodate the multi-link suspension. A rigid high-torsion rear body frame is used to firmly support suspension input during acceleration, deceleration and cornering. High-rigidity foam optimally positioned around the back door opening provides effective reinforcement while enabling a lightweight and highly rigid body. In addition, the mounting points for the rear suspension and the rear suspension member have been significantly reinforced. Short pitch welding, Laser Screw Welding (LSW) and structural adhesives were used to further boost joint strength. The use of highly-rigid, die-cast aluminium for the steering support heightens linear steering response, and a twin-hood lock structure reinforces rigidity, contributing to excellent front lateral flexural rigidity and exhilarating driving performance.



## — DRIVING SIGNATURE



### Quietness

The RX pursues a balanced sense of quietness where no particular sound stands out, so it is not affected by changes in the road's surface or the surrounding environment. Refinements include modifying the weather strip and glass run strip on the front and rear doors to enhance door sealing, a twin-lock structure to suppress engine hood vibration, and high sound insulation front door glass. The high body rigidity enabled by the multi-link suspension and optimising the frame setup further enhances quietness. Road noise was reduced by optimising placement of sound-absorbing materials and using high-dampening materials in each panel. In addition, the shape of the front pillar and cowl louvre were optimised to regulate airflow and reduce wind noise. High-damping mastic is used on the roof and side door panels, which have a large surface area that can transmit road noise, mitigating stress from noise due to changes in the road surface.

### Aerodynamic Performance

Aerodynamic design optimises airflow around the front, reducing the drag value while providing excellent brake cooling performance. Under the vehicle's floor, dimples in the engine generate micro-vortices, enhancing the feeling of ground contact and high-speed stability. Minimising the height differences between the door and the window surface efficiently suppresses airflow fluctuation, while the shape of the rear spoiler end and gate-shaped spoiler on the rear window is designed to help suppress turbulent airflow and enhance handling stability. On F SPORT and F SPORT Performance models, fins on the rear lower bumper help suppress turbulent airflow behind the rear tires, contributing to excellent straight line stability at high speeds and in side winds.

## — DRIVING SIGNATURE



### Lightweight Body

In addition to optimising the materials used on the platform's main frame, the front fenders are made of aluminium and the centre pillars from hot-stamped Gigapascal (2GPa) material. This significantly reduces weight without compromising safety, contributing to a lower centre of gravity and enhanced handling stability.



### Drive Mode Select

Drive mode select enables drivers to choose from a range of drive modes to match their individual situation. The platform is accessed using soft switches found in the centre display.



## — DRIVING SIGNATURE



350h Luxury AWD model shown

### A. Electric Parking Brake (EPB)

The parking brake activates and deactivates at the touch of a simple switch. It activates automatically when automatic mode is selected and the shift position is moved to 'P'. It is deactivated when the shift position is moved away from 'P' while pressing the brake pedal.

### B. Brake Hold

The brake hold system keeps the brakes applied so that the driver can take their foot off the pedal but keep the vehicle stopped and in place. To release the brake hold function, the driver simply touches the accelerator pedal and the car will smoothly move off.

### C. Trail Mode<sup>1</sup>

Trail mode provides integrated control of the AWD, braking and drive force to help prevent the wheels from slipping when driving on slippery or uneven road surfaces.

### Downhill Assist Control (DAC)<sup>2</sup>

DAC is available on the RX 350 AWD models. The system helps to help prevent excessive speed on steep downhill slopes. The system operates when the vehicle is traveling under 30km/h while the accelerator and brake pedals are released.

<sup>1</sup>Available on AWD models.

<sup>2</sup>Driver assist feature. Only operates under certain conditions. Check your Owner's Manual for explanation of limitations. Please drive safely. Overseas model shown. Australian specifications and features may differ. See your Lexus dealer for details.

## — DRIVING SIGNATURE RX 350



### 2.4-litre Turbo AWD

The 2.4-litre inline 4-cylinder turbo engine responds directly to accelerator input, providing smooth acceleration and driving power. Based on TNGA engine technology, it features a high-efficiency turbocharger, centre direct injection system, and variable cooling system. Utilising ample torque, it delivers powerful and dynamic performance.

### Electronically Controlled Full-Time AWD

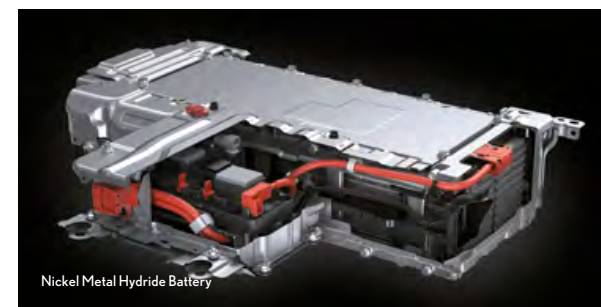
It optimises the drive force of the front and rear wheels via an electronically controlled coupling (wet-type multi-disc clutch) on the rear differential. The front/rear drive force distribution is constantly variable from 75:25 to 50:50 depending on the situation, providing both excellent traction and linear steering.

### Direct Shift-8AT

Developed for the 2.4-litre turbo engine, it yields powerful performance with low-rpm from a turbo power-plant. The AT control system selects the optimum gear by anticipating driver intentions based on control inputs and judges, continuously changing road conditions from the front camera module. It provides quietness while cruising and heightens driving enjoyment with lower gear selection when driving more actively.



## — DRIVING SIGNATURE RX 350h



### 2.5L HEV E-Four / 2.5L HEV FF

The hybrid system combines a highly efficient and responsive 2.5-litre inline 4-cylinder engine and high-output motor. Smooth direct driving performance has been enabled by effectively combining a highly responsive engine and bipolar nickel-metal hydride battery, providing enhanced battery performance and hybrid system control with revised drive force characteristics. On AWD models, E-Four, a motor-driven AWD system, uses various sensors to determine when drive force is needed in the rear, such as during start-up or normal driving, and precisely controls the front-rear torque distribution between 60:40 and 20:80. It efficiently uses battery power to drive the front and rear motors, as well as delivering excellent starting and driving performance.

## — DRIVING SIGNATURE RX 450h+



### **2.5L Petrol 4-cylinder Engine with Plug-in Hybrid System (PHEV)**

Utilising a 2.5 litre series parallel hybrid plug-in system paired with powerful electric motors front and rear, the RX 450h+ outputs a combined 227kW and accelerates from 0-100 km/h in 6.5 seconds.



## — DRIVING SIGNATURE RX 500h F SPORT PERFORMANCE



### 2.4L Turbo HEV DIRECT4

Lexus aims to push the evolution of fundamental performance using electrification technology, providing drivers with the joy and exhilaration of driving. The RX features DIRECT4 which works in conjunction with a new HEV system. Precise all-wheel drive control maximises the grip of the front and rear wheels, while also providing posture control to deliver an exhilarating driving experience. The F SPORT Performance is an innovation that takes the existing F SPORT one step further by offering an enhanced powertrain.

## — DRIVING SIGNATURE RX 500h F SPORT PERFORMANCE



### **2.4L Turbo Petrol 4-cylinder Engine with Parallel Hybrid System**

2.4L-T HEV on the RX 500h features a front unit integrating a 2.4L turbocharged engine motor, a 6-speed automatic transmission and an eAxe with a built-in high-output motor driving the rear wheels, and a high-power bipolar nickel-metal hydride battery under the rear seats. This system harnesses the powerful torque of the turbocharged engine adding the quick response of the electric motor torque to provide a direct, torque-filled and continuous acceleration. In addition, the 6-speed AT uses a wet start clutch in place of a torque converter to deliver rhythmic and responsive shifting. The transaxle uses a built-in clutch to separate the engine and motor, allowing them to be used independently or together depending on driving conditions.



## — DRIVING SIGNATURE RX 500h F SPORT PERFORMANCE



### F SPORT Performance/F SPORT features

A Seamless grille (Mesh type)/Side grille (Mesh type)

### F SPORT Performance exclusive features

B Emblem

C Piano Black paint door mirror

D Front lower bumper (Body-coloured)/Front bumper side moulding (Body-coloured)

E Body-coloured rocker moulding

F 235/50R21 101W tyre and 21x8J aluminium wheel (Matte Black paint)

G Door window frame moulding (Black stainless)

H Rear lower bumper (Body-coloured)/Rear bumper moulding (Piano Black)

## — DRIVING SIGNATURE RX 500h F SPORT PERFORMANCE



### F SPORT Performance exclusive features

- A Emblem
- B Front lower bumper (Body-coloured)/Front bumper side moulding (Body-coloured)
- C 235/50R21 101W tyre and 21x8J aluminium wheel (Matte Black paint)
- D Rear lower bumper (Body-coloured)/Rear bumper moulding (Piano Black)



## — DRIVING SIGNATURE RX 500h F SPORT PERFORMANCE



### F SPORT Performance/F SPORT features

- A Premium leather steering wheel with paddle shifters
- B Premium leather shift knob
- C TFT meter
- D Aluminium sport pedals and footrest
- E Real aluminium ornamentation
- F Leather-accented sport seats

### F SPORT Performance exclusive features

- G Emblem

## — DRIVING SIGNATURE RX 500h F SPORT PERFORMANCE

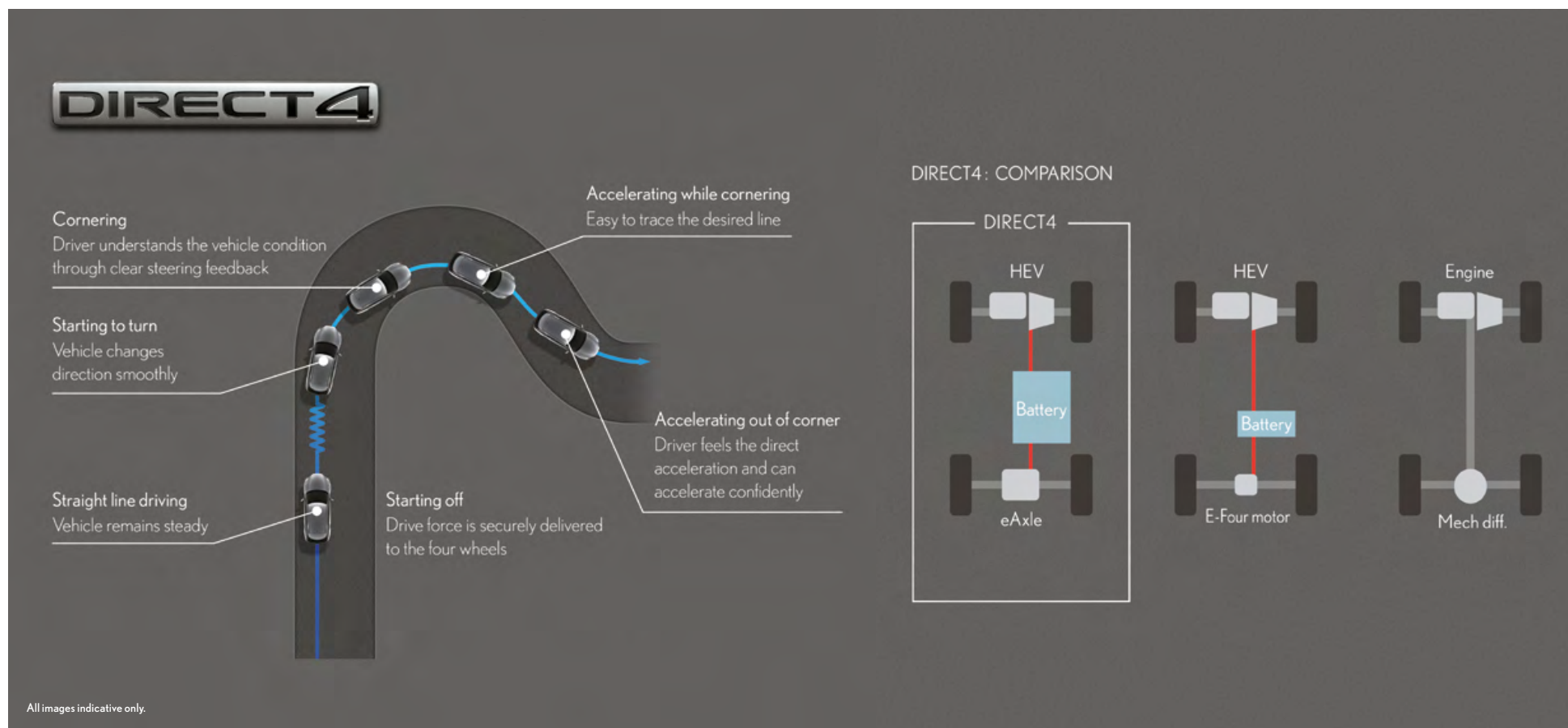


### F SPORT Performance exclusive features

- G Emblem
- H Scuff plate (Black Badging)



## — DRIVING SIGNATURE RX 500h F SPORT PERFORMANCE

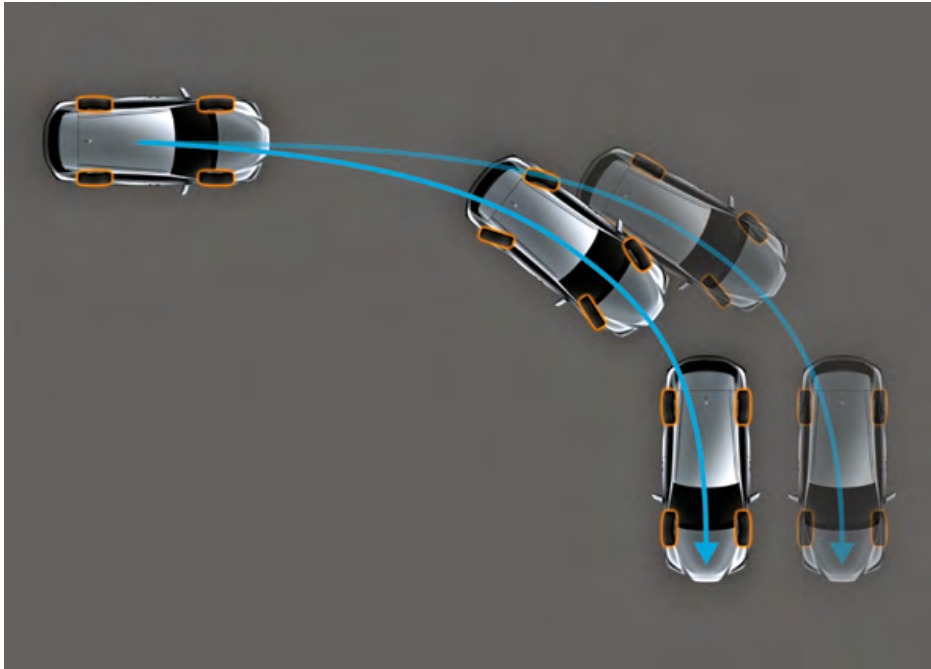


### DIRECT4

DIRECT4's drive force control uses data collected from movements in the wheel, acceleration and steering angles to help optimise the drive force distribution ratio of the front and rear wheels between 70:30 and 20:80 (front wheels: rear wheels). This contributes to enhanced start-up acceleration, handling stability, and fuel economy. When accelerating from a standstill or in a straight line, the system controls vehicle pitch to provide a feeling of direct acceleration. When cornering, the system controls

drive force distribution according to driving conditions, contributing to excellent handling stability, as well as an exhilarating performance that allows the vehicle to turn smoothly. Lexus has combined electrification and vehicle motion control technologies, cultivated over many years, to deliver an experience where the driver can interact closely with their vehicle.

## — DRIVING SIGNATURE



### Dynamic Rear Steering (DRS)

Available on the RX F SPORT Performance grade, the DRS steers the rear wheels up to four degrees in the same or opposite direction as the front wheels, depending on vehicle speed. At low speeds, the system provides excellent turning and manoeuvrability during cornering, while a high level of vehicle stability is provided in high-speed ranges.

### Active Noise Control (ANC)

Audio speakers in the cabin output sound waves that suppress the noise characteristics of the four-cylinder turbocharged engine, keeping the interior quiet. Available on RX 500h and RX 350.

### Active Sound Control (ASC)

This feature furthers the exhilarating dialogue between car and driver, by producing driving sounds that express the power and broad range of the engine and motor. Available on RX 500h.



### Brakes/Tyres

Further refining the Lexus Driving Signature, aluminium monoblock opposed six-piston brake calipers<sup>1</sup> are used for the front brakes to provide a linear and direct brake feel. Together with exclusive 19-inch or 21-inch wheels, specially constructed tyres enhance ride comfort and quietness, as well as enhanced grip and performance.

### Vehicle Braking Posture Control

The RX 500h, RX 450h+ and RX 350h 2WD/AWD feature an electronically-controlled braking system that enables coordinated front and rear regeneration through independent front and rear hydraulic controls. Vehicle Braking Posture Control contributes to providing peace of mind with the linear braking feel and enhanced ground contact during braking by optimising brake force distribution to the front and rear wheels in response to the amount of brake operation by the driver.

<sup>1</sup>Available on F SPORT and F SPORT Performance grades only.

Note: Vehicles pictured and specifications detailed in this catalog may vary from models and equipment available in your area. Please enquire at your local dealer for details on the availability of features. Overseas model shown. Australian specifications and features may differ. See your Lexus dealer for details.



# LEXUS — DESIGN



## — DESIGN



Since its launch in 1998, the RX has been a pioneer in luxury crossovers, constantly evolving its strength and finesse. The design of the RX was driven by the dedicated pursuit of a unique identity and proportions. It is expressed in the design concept ALLURING x VERVE, which evokes a captivating and seductive presence with a powerful sense of spirit.

The vehicle has a solid stance thanks to an extended wheelbase, low centre of gravity and wide front and rear treads. This combination has created a fresh appearance and presence, complementing the Lexus RX's drive force control and driving experience.



## — DESIGN



### Design Concept - Side

In side profile, the raised front hood edge, along with a lowered back window create a horizontal posture that presses towards the ground with a low, elegant centre of gravity. While retaining the overall length and front overhang, the base of the front pillar is pushed gently back, emphasising the elongated hood and accentuating the cabin mass at the rear. Flared surface contours extend from the rear door to

the rear fenders, visually highlighting tractional strength of the eAxe and wheels. This creates a beautiful highlight loop from all side surfaces connecting directly into the side sill. The quarter-pillar utilises a floating design in three-dimensional form, wrapping around to the rear, to create a holistically stylish expression.

## DESIGN



### Design Concept - Front

The spindle design, a symbol of Lexus, is embossed in a three-dimensional form, evolving into a new expression called the spindle body. The body-coloured panel extends to the bottom of the Lexus emblem, emphasising the strength of the form, as well as the mathematical beauty of the grille gradation. The seamless expression of the fusion between body and grille accentuate the impression of strength and a low centre of gravity, pushing the boundaries of identity and distinctiveness.



### Design Concept - Rear

A simple, strong mass flows horizontally to form the wide stance with a low centre of gravity, projecting a sense of power and strength. The rear combination lamps feature the signature Lexus L-shaped light bar with lenses that wrap around the sides of the body, further emphasising the wide silhouette and low centre of gravity.



## DESIGN



All images indicative only.

### Interior Design Concept: Tazuna

The cockpit design is inspired by the Tazuna concept - a principle that enhances Lexus' human-centred philosophy in vehicle craftsmanship. The Tazuna, Japanese for rein, is an important means of communication between a horse and rider. Lexus' interior concept draws upon this relationship, linking the partnership between human and machine with an intuitive layout that forges a deeper mutual understanding. Where the driver is seated, omotenashi-influenced design and cutting-edge technologies come together. The steering wheel switches, for example, are highly integrated with the Head-up Display<sup>1</sup> to create a space where every driver can concentrate on the road ahead, in full awareness of the spaces around them. Navigation, audio, and various functions can be controlled without extra eye movement or complicated switch operations.

### Head-up Display (HUD)<sup>1</sup>

A colour Head-up Display projects key driving information in the driver's field of view at the bottom of the windshield glass. Three display modes are provided to enhance driving enjoyment while maintaining an ample field of vision for added safety and visibility of all road conditions around the vehicle.

### Touch Tracing Operation<sup>1</sup>

The steering wheel features touch tracing, which detects precisely where the driver is touching the steering wheel switch, and displays operational guidance on the colour Head-up Display. This function enables intuitive driving operation while looking ahead, without the need to look down at your hands.

<sup>1</sup>Not available on RX 350h Luxury models, excluding enhancement packs.  
Overseas model shown. Australian specifications and features may differ. See your Lexus dealer for details.

## DESIGN



### Touch Displays

The centre display features a 14" touch display with several functions integrated into soft switches. Careful attention was paid to the size, shape, layout, and information displayed on the switches, pursuing optimum placement and shape for intuitive operation, while also considering how often each function is used.



### Thin Film Transistor (TFT) LCD Meter

With optimal content layout, the TFT meter allows the driver to quickly check vital information while driving, including navigation route, driving assist system status, navigation scheduled arrival time and driving range.



## — DESIGN



Panoramic Roof (Tilt and Outer Slide Type)<sup>1</sup>

### Interior Package

The wide horizontal sweep of the instrument panel from the meter hood through to the door trim creates an expansive feeling of space. Models equipped with the panoramic roof<sup>1</sup> add to the feeling of openness with a sweeping front-to-back view. The utilisation of e-Latch technology has removed the need for standard inside door handles, freeing up space and extending the instrument panel and additional horizontal areas.

<sup>1</sup>Available on RX 350h (2WD/4WD) Luxury + EP, RX 350h (4WD) Sports Luxury + EP, RX 350 F SPORT + EP, Sports Luxury + EP, RX 450h+, RX 500h. Overseas model shown. Australian specifications and features may differ. See your Lexus dealer for details.

## — DESIGN



### Multi-Colour Interior Illumination<sup>1</sup>

The multi-colour illumination around the instrument panel creates a spacious, immersive atmosphere day and night. 14 colours were carefully selected to express humanity's deep connection to nature. In addition to the theme colours, you can select from 50 additional colours from a colour palette that can be displayed in the centre display.

<sup>1</sup>Not available on Luxury models.

Overseas model shown. Australian specifications and features may differ. See your Lexus dealer for details.



## — DESIGN



### Interior Package – Design

Pushing back the front pillar and front edge of the roof has created a comfortable space around the front seats with a feeling of openness. The GA-K platform has enabled a longer front/rear couple distance, contributing to the roomy feeling in the back. In addition to the low floor, low-profile scuff plates in the front footwell and optimising the shape of the centre pillar cover in the rear footwell provides both front and rear seat occupants with ample legroom.

## — DESIGN



### **Luggage**

The thin back door trim and low loading height contribute to both a comfortable interior space and ample luggage capacity.



# ADVANCED — TECHNOLOGY





## — ADVANCED TECHNOLOGY

LEXUS SAFETY SYSTEM + 

Lexus is continuously developing safety technologies by incorporating Lexus Safety System+.<sup>1</sup> Should the system sense appearance and behaviours not conducive to safe driving (distracted, poor posture, etc) then alerts and notifications can be issued. Face direction, eyes open/closed status and line of sight of driver are all constantly assessed. Which means even if drivers are detected looking down at a mobile phone occasionally without realising, notifications can be issued.



### When the system detects distracted behaviour such as poor posture

A display message and buzzer are used to alert the driver.<sup>1</sup>

### Driver Monitor Linking functions<sup>1</sup>

Pre-Collision System  
Dynamic Radar Cruise Control  
Lane Departure Alert (LDA)

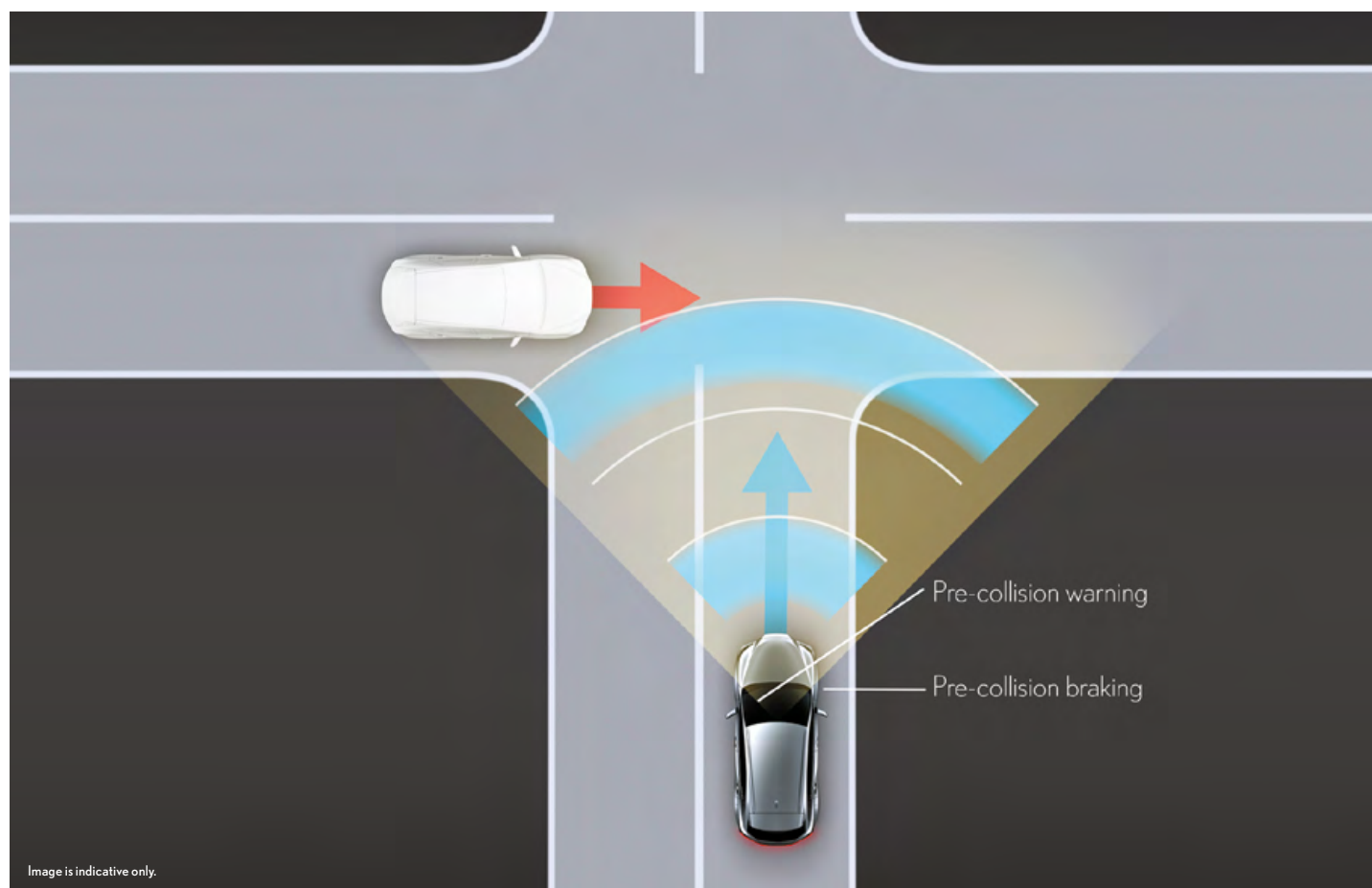
<sup>1</sup>Driver assist feature. Only operates under certain conditions. Check your Owner's Manual for explanation of limitations. Please drive safely.  
Overseas model shown. Australian specifications and features may differ. See your Lexus dealer for details.

## — ADVANCED TECHNOLOGY

LEXUS SAFETY SYSTEM + 

### Pre-Collision System<sup>1</sup>

When the millimetre-wave radar and monocular camera sensors detect a vehicle, pedestrian, cyclist (daylight only) or motorcycle ahead and determine that a collision is likely, it alerts the driver with a buzzer and on the display message. If the driver brakes suddenly, pre-collision brake assist is designed to supplement the force being applied to the pedal. If the driver cannot depress the brake pedal, the system is designed to automatically activate pre-collision braking to help avoid a collision or mitigate the impact force. If the system determines there is a high possibility of a frontal collision with an oncoming vehicle, it alerts the driver and activates the brakes to help mitigate injury to people and damage to the vehicle.



### Intersection Collision Avoidance Support (Crossing Vehicle)<sup>1</sup>

In addition to the normal Pre-Collision System operating range, the system also supports collision avoidance with vehicles and motorcycles crossing at intersections. If the system determines that a collision is likely, it is designed to alert the driver and activate the brakes to help mitigate damage.

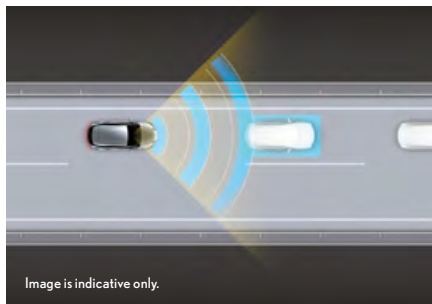
### Acceleration Suppression at Low Speed<sup>1</sup>

The millimetre-wave radar and monocular camera sensors detect pedestrians, cyclists (daylight only), and vehicles in front of the vehicle. If the accelerator is depressed hard while the vehicle is stopped or traveling slowly with an object in front, the system is designed to limit acceleration by reducing engine output or low G braking to help avoid a collision or mitigate damage. In addition, when a collision is avoided and the vehicle stops, braking force is maintained until the driver operates the accelerator or brake.

<sup>1</sup>Driver assist feature. Only operates under certain conditions. Check your Owner's Manual for explanation of limitations. Please drive safely. Overseas model shown. Australian specifications and features may differ. See your Lexus dealer for details.

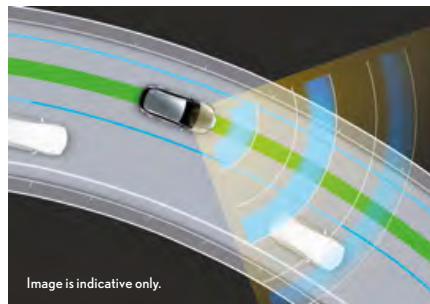


## — ADVANCED TECHNOLOGY



### Dynamic Radar Cruise Control (With full speed range)<sup>1</sup>

In addition to maintaining a constant speed, Dynamic Radar Cruise Control is designed to use the millimetre-wave radar and monocular camera sensors to detect a vehicle driving ahead and maintain an appropriate distance between vehicles. When the driver operates the turn signal lamp at approximately 80km/h or over, preliminary acceleration is applied when following any preceding vehicle that is travelling slower than the preset vehicle speed. In addition, preliminary deceleration is applied when changing lanes into a lane where there is a preceding vehicle that is travelling slower than the preset vehicle speed, to support overtaking and lane change. Should the vehicle be driving through a curve, a Curve Speed Reduction Function decelerates the vehicle, reducing the need to cancel Dynamic Radar Cruise Control operation and enhancing driver convenience.



### Lane Tracing Assist (LTA)<sup>1</sup>

When driving on freeways and highways with lane lines using Dynamic Radar Cruise Control, the system is designed to assist the steering operation required to keep the vehicle in its lane. Enhanced recognition and control performance enable assistance on gentle curves, smoothly keeping the vehicle in the centre of its lane with minimal swaying.

### Road Sign Assist (RSA) (Speed Signs Only)<sup>1</sup>

To help support safe driving, RSA uses the monocular camera to speed limit signs, and displays them on the multi-information display and Head-up Display. While a speed limit sign is displayed, RSA notifies the driver if the vehicle speed exceeds the displayed speed limit.

### BladeScan Adaptive High Beam System (AHS)<sup>1,2</sup>

BladeScan AHS reflects LED light onto a blade mirror rotating at high speed to smoothly illuminate the road ahead with its residual image, significantly enhancing visibility at night. The LEDs switch on and off in synchronisation with the rotating mirrors, to finely adjust illuminated and shaded areas, distributing light to enable quick recognition of distant pedestrians, road shoulders, signs, and other objects. It also is designed to partially block high beams when an oncoming or preceding vehicle is detected, so they do not dazzle oncoming and preceding vehicles.

## LEXUS SAFETY SYSTEM +

### Automatic High Beam (AHB)<sup>1</sup>

Automatic High Beam automatically turns the high beam lamps off if another vehicle is detected. AHB automatically turns the high beam lamps on once the vehicle is gone.

### Emergency Driving Stop System<sup>1</sup>

If the driver becomes unable to operate the vehicle while LTA is activated, such as due to sudden illness, the system is designed to slow the vehicle to a stop within the lane while warning others in the area.

<sup>1</sup>Driver assist feature. Only operates under certain conditions. Check your Owner's Manual for explanation of limitations. Please drive safely.

<sup>2</sup>Not available on RX 350h Luxury.

Overseas model shown. Australian specifications and features may differ. See your Lexus dealer for details.

## — ADVANCED TECHNOLOGY

## LEXUS SAFETY SYSTEM +



### Lexus Teammate Advanced Park<sup>1,2</sup>

#### Advanced Park 6 functions

- perpendicular parking (reverse) - perpendicular parking (forward)
- perpendicular exiting (reverse) - perpendicular exiting (forward)
- parallel parking - parallel exiting

Combining information from cameras and ultrasonic sensors that monitor the vehicle's surroundings, Advanced Park is designed to support appropriate recognition and parking in open parking spots. In addition to automatically controlling steering, accelerating, braking and shift changes, it helps smooth parking by continuously displaying a bird's-eye view of blind spots and the target car park location. Parking operation starts smoothly once the driver stops next to the parking space, presses the main switch, checks the vehicle's surroundings and the parking space, and presses the start switch on the display. Information about the vehicle's surroundings is communicated to the driver in an easy-to-understand manner, showing the locations of obstacles on the display. If the system detects there is the possibility of hitting an obstacle, it is designed to alert the driver and helps avoid it by applying brake control.



### Blind Spot Monitor (BSM)<sup>2</sup>

During lane changes, the BSM is designed to use rear lateral side millimetre-wave radar to detect vehicles present in the blind spots (areas in adjacent lanes that cannot be seen using the outer mirrors), and alerts the driver using an indicator in the outer mirror and a buzzer.

### Safe Exit Assist (SEA)<sup>2</sup>

SEA uses the BSM to detect vehicles (including bicycles) approaching from the rear when exiting the vehicle. If SEA determines a collision with an opened door or exiting occupants is a possibility, an indicator in the door mirror lights up to alert occupants. In addition, if an occupant tries to open a door, the e-Latch system is designed to cancel door opening operation. Occupants are alerted by flashing indicators in the door mirror, the multi-information display, and a buzzer. If the BSM rear side millimetre-wave radars detect a vehicle approaching from the rear while stopped, and the system determines the possibility of a rear-end collision is high, it activates the brakes to reduce the vehicle speed. It is also designed to activate in the event of a rear end collision and helps to avoid or mitigate damage due to a secondary collision with a preceding vehicle, crossing pedestrians or roadside objects.

### Secondary Collision Brake<sup>2</sup>

If the BSM rear side millimetre-wave radars detect a vehicle approaching from the rear while stopped, and the system determines the possibility of a rear-end collision is high, it activates the brakes to reduce the vehicle speed. It is also designed to activate in the event of a rear end collision and helps to avoid or mitigate damage due to a secondary collision with a preceding vehicle, crossing pedestrians or roadside objects.

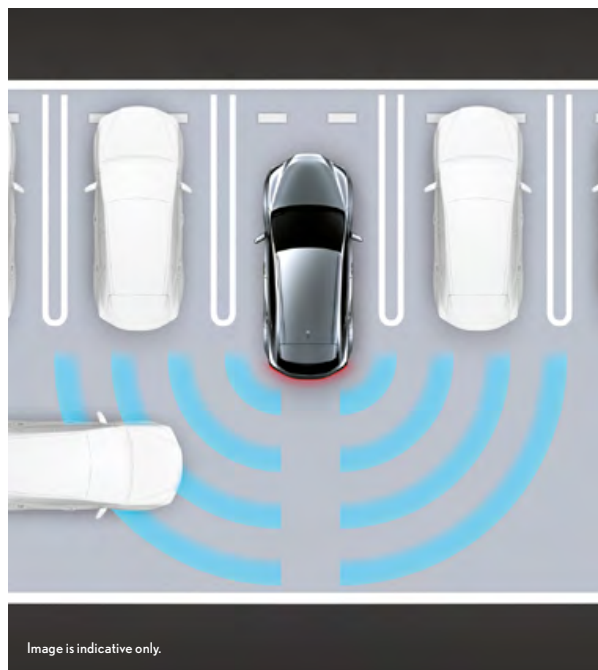
<sup>1</sup>Available on RX 350h AWD Sports Luxury + EP2, RX 350 F SPORT + EP2, RX 350 Sports Luxury + EP2, RX 450h+ Sports Luxury and RX 500h.

<sup>2</sup>Driver assist feature. Only operates under certain conditions. Check your Owner's Manual for explanation of limitations. Please drive safely.  
Overseas model shown. Australian specifications and features may differ. See your Lexus dealer for details.



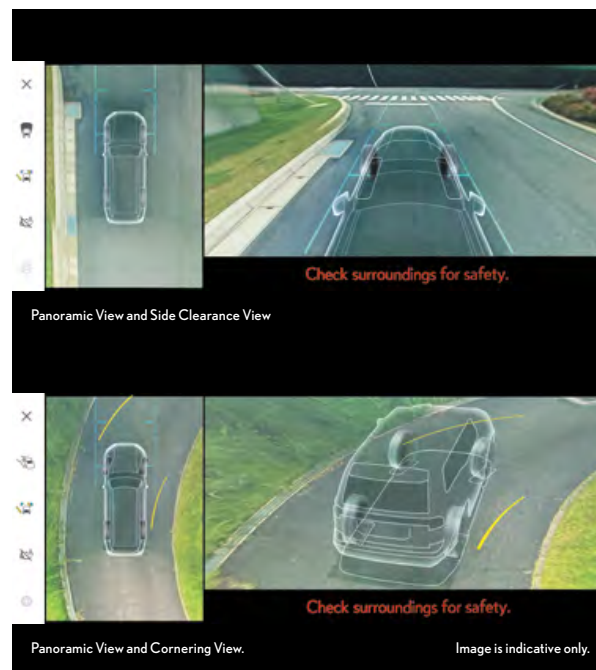
## — ADVANCED TECHNOLOGY

LEXUS SAFETY SYSTEM + 



### Parking Support Brake (PKSB)<sup>1</sup>

While the vehicle is travelling at a low speed, if there is a detected possibility of contact with a static object, a vehicle or a pedestrian approaching from the rear, the system is designed to apply drive force control and brake control. Detection covers a wide area, helping to avoid minor collisions and reduce damage.



### Panoramic View Monitor<sup>1,2</sup>

Panoramic View Monitor combines video from cameras mounted on the front, sides and rear of the vehicle to display a composite image showing a bird's-eye view, helping the driver to check areas that are difficult to see from the driver's seat. The monitor offers 3 views: See-through View, which looks through the body and seats as if they were transparent; Side Clearance View, which lets you check the sides of the vehicle for safe clearance; and Cornering View, which helps you avoid hitting obstacles on narrow roads.



### Digital Rear View Mirror<sup>1,3</sup>

Digital Digital Rear View Mirror displays images from the backup camera at the rear of the vehicle on the in-mirror display, providing a wide field of view and images adjusted for clarity, enhancing excellent visibility even when it is difficult to check behind. In addition, a camera-washer system helps remove dirt including raindrops, mud, snow and snow melting agents.

<sup>1</sup>Driver assist feature. Only operates under certain conditions. Check your Owner's Manual for explanation of limitations. Please drive safely.

<sup>2</sup>Not available on RX 350h Luxury models.

<sup>3</sup>Available on RX 350h Sports Luxury + EP2, RX 350 F SPORT + EP2, RX 350 Sports Luxury + EP2, RX 450h+ Sports Luxury and RX 500h models. Overseas model shown. Australian specifications and features may differ. See your Lexus dealer for details.

# OTHER — EQUIPMENT





## — OTHER EQUIPMENT

A subtle integration of refined technologies.



### Headlamps

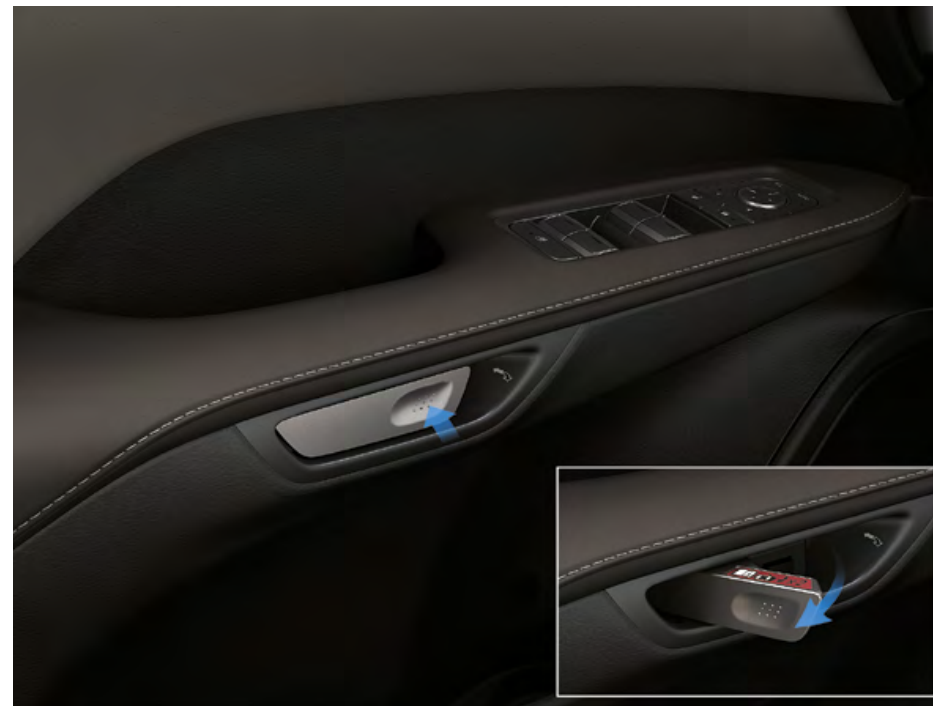
The high grade slim 3-projector Bi-Beam LED headlamps<sup>1</sup> feature a black-toned extension that creates a subdued presence, highlighting the L-signature of the Daytime Running Light (DRL). The RX 350h Luxury model single-projector Bi-Beam LED headlamps with integrated L-signature DRL pursue a simple elegant design. Headlamp cleaners are set flush with the bumper to unify the clean lines.

<sup>1</sup>Not available on RX 350h Luxury.

<sup>2</sup>Available on RX 500h, RX 450h+ Sports Luxury, Sports Luxury + EP1, RX 350 F SPORT + EP1 and Sports Luxury + EP1 models only.  
Overseas model shown. Australian specifications and features may differ. See your Lexus dealer for details.

## — OTHER EQUIPMENT

A subtle integration of refined technologies.



### **e-Latch**

An e-Latch system replaces the conventional door latch/unlatch mechanism with an electronic control that opens and closes doors smoothly with no wasted movements, like a sliding shoji paper door. To open a door when getting in, simply press the switch on the inside of the handle while pulling it towards you in the usual way. When getting out, the door opens in a single action by pressing a switch while holding the door lever. If the battery power supply is cut, for instance due to a collision, the doors can be opened using a manual release.

## — OTHER EQUIPMENT

Thoughtful functionality for luggage and stowing.



### Hands Free Power Back Door<sup>1</sup>

Even if both hands are full, when carrying the Electronic Key you can open and close the back door automatically by moving your foot under the rear bumper and out again. The design enables fast, quiet operation, and a buzzer confirms a successful action when to move your foot out. In addition, when carrying the Electronic Key, if you press the Close and Lock switch or activate the kick sensor and walk away, a walk-away function fully closes the back door and then locks all the doors.



### One Touch Roll Up Tonneau Cover

When the knob on the tonneau cover is pulled up, the cover automatically retracts along rails in the deck sides. This is done in a one-touch operation, enabling easy operation without leaning forward.

<sup>1</sup>Not available on 350h Luxury models.

Overseas model shown. Australian specifications and features may differ. See your Lexus dealer for details.



## — OTHER EQUIPMENT

Stylish comfort and support for long rides.



### Front Seats

The seats feature a TNGA frame, which together with a reinforced construction, helps maintain a minimal-burden driving posture on long drives. The deep-hung construction pulls the upholstery fixing position deeply inward on the pad side, reducing the change in the sitting pressure on the cushion when subjected to sideways load. This provides excellent postural stability during cornering. On models equipped with a seat memory system, the driver's seat features a power easy access system that integrates auto lift-down, slide away and return functions, enabling smooth, stress-free ingress and egress.

### Wet-arm Wiper

A wet-arm type wiper with built-in washer nozzles provides superior wiping performance. Main and sub-nozzles in the wiper arm spray washing fluid on the windows ahead of the moving arm, reducing obstruction from the washing fluid to effectively clear the driver's field of view.

## — OTHER EQUIPMENT



### Rear Seats (40:20:40 Split Folding)

The shape of the seatback was optimised to help suppress rocking of the occupant's head and minimise motion sickness, contributing to refined ride comfort. On the power folding rear seats,<sup>1</sup> the seats are folded/unfolded using switches on the sides of the seats, in the luggage space, or the soft switch on the touch display. For the RX 350h Luxury models manual folding rear seats, an electric switch in the luggage space folds the seats with minimal effort.

<sup>1</sup>Available on Sports Luxury grades only.

Overseas model shown. Australian specifications and features may differ. See your Lexus dealer for details.

## — OTHER EQUIPMENT

Refined details enhance your driving experience.



### Centre Console

A recessed cupholder with sliding height enables the storing of cups, tumblers and objects. Non-slip matting is included, designed to allow the driver to open a bottle lid one-handed without needing to look away from the road. A large storage box is positioned at the front of the centre console. With its sliding lid, there is easy access to a wireless charger<sup>1</sup> for phones/compatible devices. In addition, a front tray provides convenient extra storage for your smart phone, sunglasses and other items.



### Wireless Charger<sup>1</sup>

Set inside the front box with lid, the wireless charger works with Qi-compatible phones and devices. To operate, simply place them on the charger tray.

<sup>1</sup>Only Qi-supported devices compatible. Refer to device manufacturer. May require additional purchase of accessory to support wireless charging. Not available on RX 350h Luxury models. Overseas model shown. Australian specifications and features may differ. See your Lexus dealer for details.



## — OTHER EQUIPMENT

Power and ports to keep you connected.



Centre Console: 3 USB Type C charging and USB Type A multimedia communication ports, DC12V



Console Rear End: 2 USB Type C charging ports



Luggage Space: DC12V

## — OTHER EQUIPMENT

Personal comfort without compromise.



### 3-Zone Independent Temperature Control

The 3-Zone Independent Temperature Control system enables individual automated control of the cabin temperature in the driver's seat, front passenger's seats and rear seats, providing a comfortable interior space for each occupant.

#### nanoeX™<sup>1</sup>

The climate control system integrates advanced nanoeX™ technology which discharges mildly acidic nanoe ions from the air conditioner registers, helping to fill the cabin with fresh air.



### Lexus Climate Concierge

Lexus Climate Concierge coordinates with the auto air conditioning to automatically control the front seat heaters and steering wheel heater when the heater is on, or the front seat ventilation when the air conditioning is on, providing optimal comfort for each occupant.

#### Seat Heater (Front)

The heating area and heat distribution of the seats have been optimised to provide pleasant warmth across the whole seat cushion.

#### Seat Ventilation (Front and Rear)<sup>2</sup>

Suction type seat ventilation is available on the front and outboard rear seats. Switches for adjusting the seat heater and ventilation in the rear seats are in the console rear end panel.

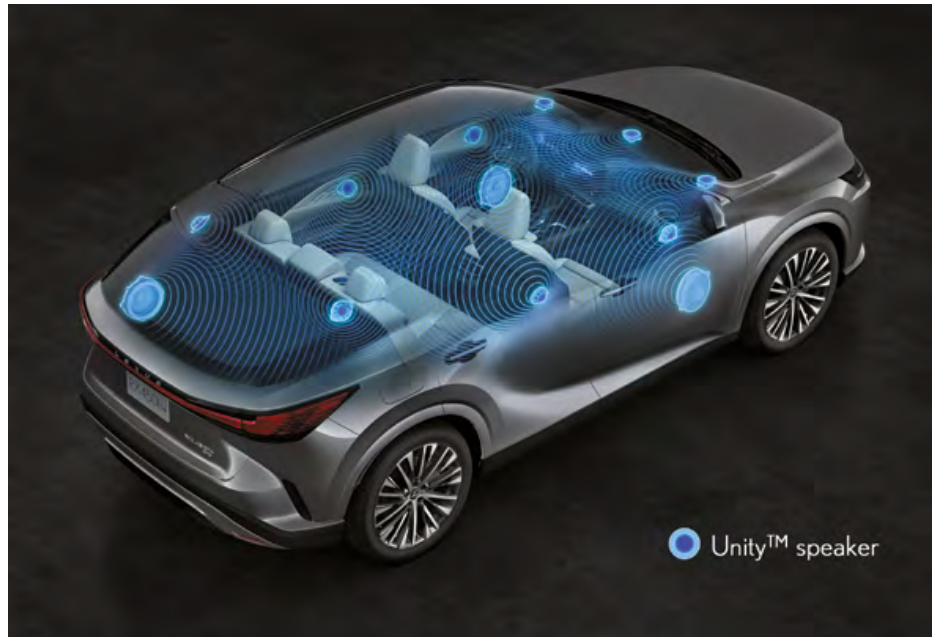
<sup>1</sup>Product and company names are trademarks of their respective owners.

<sup>2</sup>Available on Sports Luxury grades only.

Overseas model shown. Australian specifications and features may differ. See your Lexus dealer for details.

## — OTHER EQUIPMENT

The rich pleasures of premium sound.



### Mark Levinson<sup>TM1</sup> 21-Speaker Premium Surround Sound System<sup>2</sup>

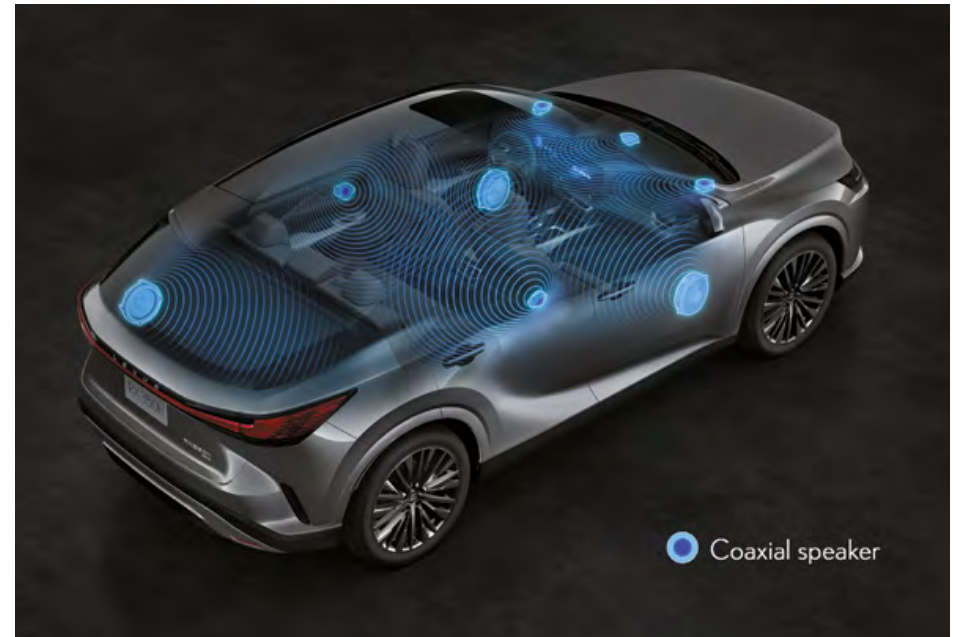
Step into a world of pure, immersive audio with the Mark Levinson<sup>TM1</sup> Premium Surround Sound system. Featuring 21 strategically placed speakers, this system delivers rich, high-fidelity sound across all music genres – creating a live concert experience right inside your vehicle. PurePlay<sup>TM1</sup> Technology ensures undistorted, crystal-clear sound, while the innovative Quantum Logic<sup>TM1</sup> Surround (QLS) elevates the audio experience with a full-bodied sound stage and exceptional clarity. Clari-Fi<sup>TM1</sup> 2.0 restores detail to compressed audio files, so even low-quality tracks sound closer to the original recording. The cabin features Unity<sup>TM1</sup> speakers with integrated tweeter/mid-range design, positioned at ear level to create a consistent and immersive sound stage that surrounds every passenger. A powerful 22.4 cm subwoofer is built into the deck sides, delivering deep, resonant bass that fills the space with rich low tones.

<sup>1</sup>Product and company names are trademarks of their respective owners.

<sup>2</sup>Not available on RX 350h Luxury and 450h+ Luxury models.

<sup>3</sup>Only available on RX 350h Luxury and 450h+ Luxury models.

Overseas model shown. Australian specifications and features may differ. See your Lexus dealer for details.

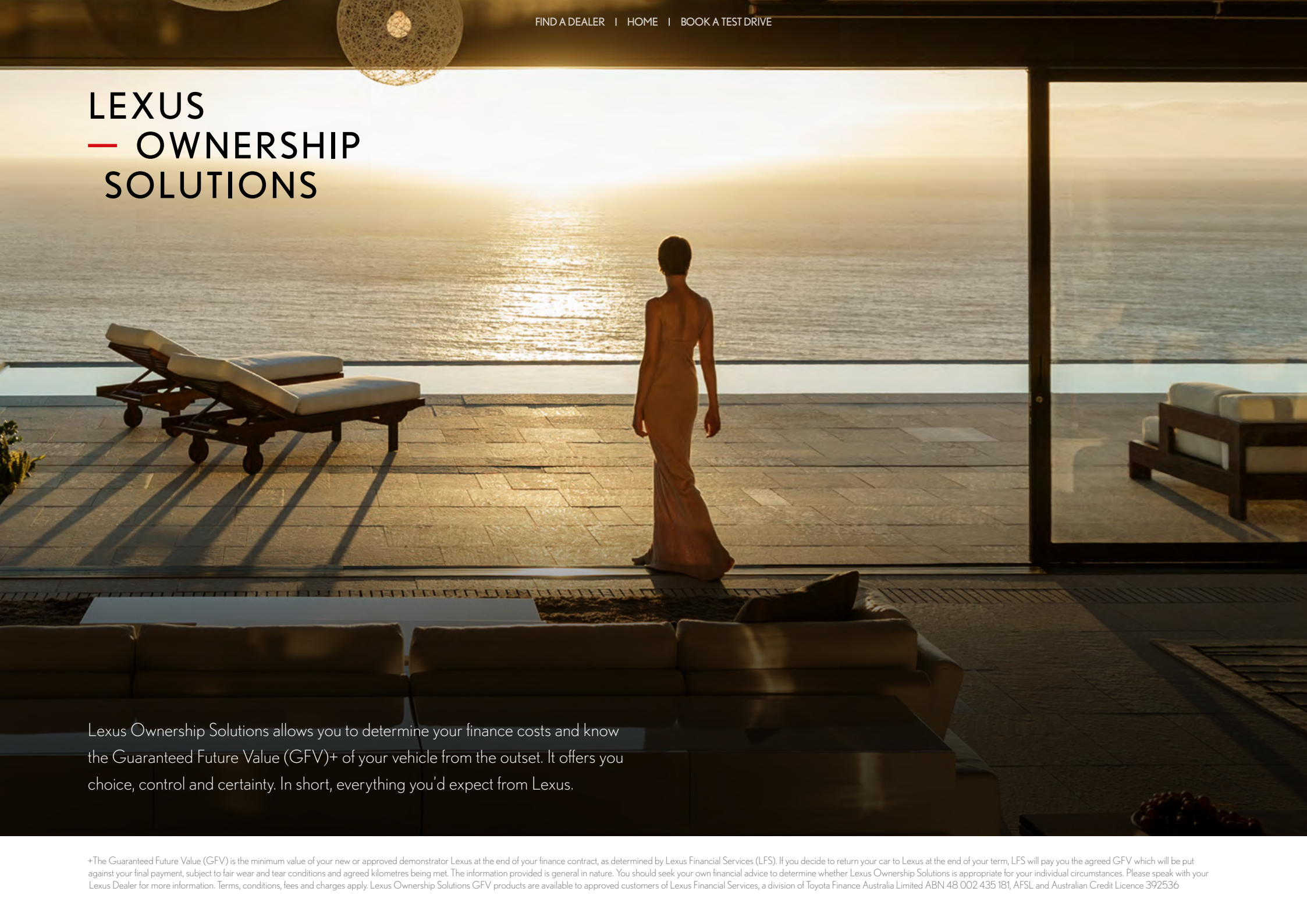


### Lexus RX Premium Sound System<sup>3</sup>

The system supports high-resolution playback to create a performance space and detailed expression of a live performance, such as the soft sounds produced by instruments. A bamboo charcoal plant opal diaphragm on mid-range speakers provides clear and vivid vocal playback. Optimal placement of the speakers creates an exceptional surround sound effect, creating a relaxed and smooth acoustic space. In addition, a 20cm box subwoofer under the rear deck provides rich, deep and crisp bass.



# LEXUS — OWNERSHIP SOLUTIONS



Lexus Ownership Solutions allows you to determine your finance costs and know the Guaranteed Future Value (GFV)+ of your vehicle from the outset. It offers you choice, control and certainty. In short, everything you'd expect from Lexus.

+The Guaranteed Future Value (GFV) is the minimum value of your new or approved demonstrator Lexus at the end of your finance contract, as determined by Lexus Financial Services (LFS). If you decide to return your car to Lexus at the end of your term, LFS will pay you the agreed GFV which will be put against your final payment, subject to fair wear and tear conditions and agreed kilometres being met. The information provided is general in nature. You should seek your own financial advice to determine whether Lexus Ownership Solutions is appropriate for your individual circumstances. Please speak with your Lexus Dealer for more information. Terms, conditions, fees and charges apply. Lexus Ownership Solutions GFV products are available to approved customers of Lexus Financial Services, a division of Toyota Finance Australia Limited ABN 48 002 435 181, AFSL and Australian Credit Licence 392536

## — LEXUS OWNERSHIP SOLUTIONS

### How does Lexus Ownership Solutions work?

You choose the deposit that best fits your needs.

- You choose your term, ranging from 1 – 4 years.
- You decide on the estimated kilometres you think the vehicle will have travelled at the end of the term (the End Odometer). The End Odometer will also include any kilometres already on the vehicle.
- Lexus Financial Services (LFS) then determines the GFV+ of your vehicle and calculates your monthly repayments with a final payment equal to the GFV. The GFV is the minimum value of your Lexus at the end of your finance contract. So, if you choose to return your Lexus at the end of the term, LFS will pay you the GFV which will be put towards the remaining balance owing on your account (subject to fair wear and tear conditions and agreed kilometres being met).

### The end of the term? Simply replace, retain or return.

At the end of your term you can choose to:

- Replace or sell your Lexus using the trade-in value or sale price to pay the remaining balance of your account.
- Retain your Lexus and simply pay the remaining balance of your account (including final payment).
- Alternatively, return your Lexus and, subject to fair wear and tear conditions and the agreed kilometres being met, we'll put the GFV towards the remaining balance on your account.

### Choosing your deposit – what is best for you?

With the flexibility of Lexus Ownership Solutions, you can choose the deposit that best fits your current needs.

- If, for example, you have funds tied up in other investments, you can choose to finance your new Lexus with a zero deposit.<sup>††</sup>
- Alternatively, by using a larger deposit, you can lower your monthly repayments.
- Or, compared to other finance options over a similar term with no GFV or equivalent balloon final payment, Lexus Ownership Solutions can provide lower monthly repayments.<sup>††</sup>

### Want more certainty?

With Lexus Ownership Solutions, you've got the reassurance that at the end of the term (subject to fair wear and tear and agreed kilometres being met), you will know your GFV<sup>+</sup>, the minimum value of your Lexus from the outset, as determined by LFS.

### What happens in the case of the unexpected?

If your vehicle incurs damage and does not meet the Fair Wear and Tear guidelines, LFS will give you the opportunity to have your vehicle repaired. Otherwise, LFS can organise the repairs and deduct the cost from your GFV. This adjusted GFV will then be the price that LFS will offer you if you return the vehicle at the end of your term. Of course, if you retain the vehicle, the condition doesn't matter, however, if you replace it or sell it privately, the condition will obviously impact your sale price.

### So what does your accountant think?

Naturally, we think Lexus Ownership Solutions is an excellent, innovative way to put you in control of buying a new Lexus. That said, we suggest you seek independent advice to ensure Lexus Ownership Solutions is right for you.

### Wouldn't it be great if Lexus Ownership Solutions was just the beginning?

Lexus' innovations and commitment to customer service extend well beyond Lexus Ownership Solutions. Once you purchase a new Lexus, you'll become a member of the Lexus Encore Owner Benefits Program and enjoy a host of exclusive benefits.<sup>†</sup> For further details, simply visit your nearest Lexus dealer or see [lexus.com.au/owners/benefits](https://lexus.com.au/owners/benefits)

<sup>+</sup>The Guaranteed Future Value (GFV) is the minimum value of your new or approved demonstrator Lexus at the end of your finance contract, as determined by Lexus Financial Services (LFS). If you decide to return your car to Lexus at the end of your term, LFS will pay you the agreed GFV which will be put against your final payment, subject to fair wear and tear conditions and agreed kilometres being met. The information provided is general in nature. You should seek your own financial advice to determine whether Lexus Ownership Solutions is appropriate for your individual circumstances. Please speak with your Lexus Dealer for more information. Terms, conditions, fees and charges apply. Lexus Ownership Solutions GFV products are available to approved customers of Lexus Financial Services, a division of Toyota Finance Australia Limited ABN 48 002 435 181, AFSL and Australian Credit Licence 392536.

<sup>††</sup>Lower monthly repayments compared to a similar term with no Guaranteed Future Value (GFV) or equivalent balloon final payment. Total interest charges will be higher if a GFV or balloon final payment is selected.

<sup>†</sup>Encore Program is available to all Lexus Vehicle Owners to join. Memberships and benefits vary depending on eligibility and vehicle model owned. Memberships lasts for 36 months except for paid Encore Elevate which lasts 12 months from activation by the Dealership. Inclusions may change. Subject to availability. For full T&Cs, see your Lexus Dealer or [lexus.com.au/smallprint/encore-terms](https://lexus.com.au/smallprint/encore-terms).

<sup>†††</sup>Approved applicants only. Terms and conditions apply. A deposit may be required for capacity reasons.

## — LEXUS ENCORE



### Where Life Meets Amazing

Lexus allows you to experience amazing, but it doesn't end when you get out of your car. Unlock even more luxury with Lexus Encore:<sup>2</sup> an owner benefits program that brings amazing to every area of your life. Find out more details about Lexus Encore at [lexus.com.au/owners/benefits](https://lexus.com.au/owners/benefits)

The RX is applicable to these Encore memberships:

### ENCORE

The original membership that includes DriveCare<sup>3</sup> roadside assistance, Service Loan Car, Exclusive Events and Offers, and the option to purchase Airport Lounge passes.

### ENCORE ELEVATE

This 1-year membership can be purchased by any Lexus owner.<sup>4</sup> It builds on Encore with Lexus On Demand,<sup>5</sup> Valet Parking and Airport Lounge passes.

	ENCORE	ENCORE ELEVATE	ENCORE PLATINUM	ENCORE PLATINUM ELECTRIFIED
	COMPLIMENTARY	PAID \$1,899	COMPLIMENTARY	COMPLIMENTARY
Models	LBX UX NX RX ES GX	Any Lexus model of any age <sup>1</sup>	LC LS LX LM	RZ
Duration	3 years	1 year	3 years	3 years
Exclusive Offers	✓	✓	✓	✓
Exclusive Events	✓	✓	✓	✓
Ampol Fuel Offer	✓	✓	✓	
Service Loan Car	✓		✓	✓
DriveCare	✓		✓ 10 years DriveCare for LS	✓ 5 years DriveCare
On Demand		✓ Up to 5 days x 2	✓ Up to 8 days x 4	✓ Up to 8 days x 4
Valet Parking		✓ x 4	✓ x 8	✓ x 8
Airport Lounge	✓ Pay per use	✓ x 2	✓ x 4	✓ x 4
Charging Cables				✓
Home Charger and Standard Installation				✓
Complimentary Access to Chargefox Network				✓

<sup>1</sup>Lexus Vehicle Owners that have a current Encore Platinum/Encore Platinum Electrified Membership are not eligible for Encore Elevate. <sup>2</sup>Lexus Encore Member Benefits apply to all eligible new and demonstrator Lexus vehicles, for a 36-month period from the date Encore is first activated by the Dealership. Inclusions may change. Subject to availability. For full T&Cs and eligible models, see your Lexus Dealer or [lexus.com.au/encore](https://lexus.com.au/encore). <sup>3</sup>DriveCare as part of Lexus Encore Member Benefits applies for the term of membership to Lexus Encore Program, with exceptions applying to certain vehicles, through complimentary DriveCare superseding the term of the Encore Membership. Coverage and service inclusions vary dependent on the type of vehicle and vehicle location. For full T&Cs see your Lexus Dealer or [lexus.com.au/smallprint/encore-terms](https://lexus.com.au/smallprint/encore-terms). <sup>4</sup>Encore Elevate Member Benefits can be purchased by all Lexus Vehicle Owners, for a 12-month period from the date Encore is first purchased and activated by the Lexus Vehicle Owner. Inclusions may change. Subject to availability. For full T&Cs and eligible models, see your Lexus Dealer or [lexus.com.au/encore](https://lexus.com.au/encore). <sup>5</sup>Lexus On Demand as part of Encore Member Benefits applies for a 1 year period with a varying number of redemptions depending on the type of Encore Membership. Vehicles may vary dependent on location and availability. For full T&Cs, details and eligibility requirements see your Lexus Dealer or [lexus.com.au/Encore](https://lexus.com.au/Encore).



## — EXTERIOR COLOURS



White Nova <083><sup>^</sup>  
(F SPORT and F SPORT Performance only)



Sonic Quartz <085><sup>^</sup>  
(Luxury and Sports Luxury only)



Sonic Iridium <1L2><sup>^</sup>



Titanium <1J7><sup>^</sup>  
(Luxury and Sports Luxury only)



Sonic Chrome <1L1><sup>^</sup>



Graphite Black <223>



Vermillion <3R1><sup>^</sup>  
(Luxury and Sports Luxury only)



Sonic Copper <4Y5><sup>^</sup>



Khaki Metal <6X4><sup>^</sup>  
(Luxury and Sports Luxury only)



Cobalt Mica <8X1><sup>^</sup>  
(F SPORT and F SPORT Performance only)



Deep Blue <8X5><sup>^</sup>  
(Luxury, Sports Luxury and F SPORT only)

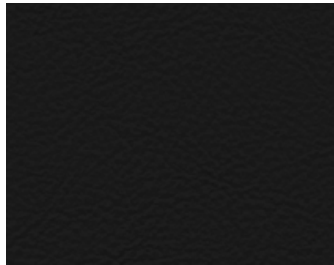
<sup>^</sup>Paint featured is an optional extra at additional cost.

Lexus Australia reserves the right to vary or discontinue the current interior and exterior colours, trims and colour/trim/model combinations.

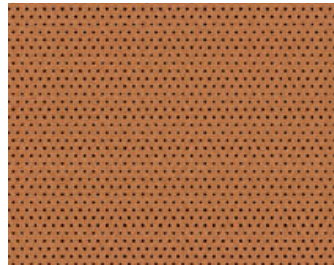
Colours and trims displayed are a guide only and may vary from actual colours due to printing/display process. See your Lexus dealer to confirm availability when ordering your vehicle.

Overseas model shown. Australian specifications and features may differ. See your Lexus dealer for details.

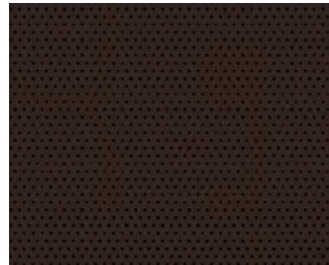
## — INTERIOR TRIMS



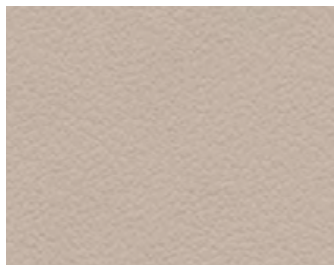
**Black**  
(Luxury and Sports Luxury only)



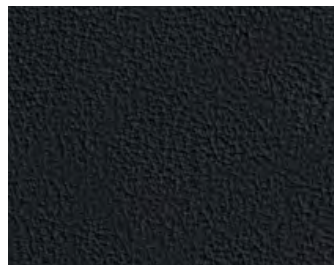
**Hazel**  
(Luxury + EP only)



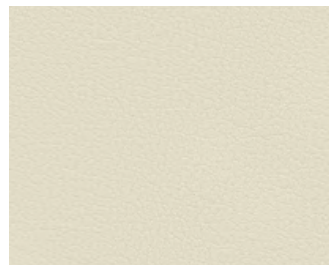
**Dark Sepia**  
(Luxury + EP and Sports Luxury only)



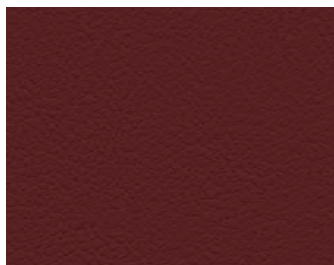
**Solis White**  
(Sports Luxury only)



**F Sport Black**  
(F Sport and  
F Sport Performance only)



**F Sport White**  
(F Sport and  
F Sport Performance only)

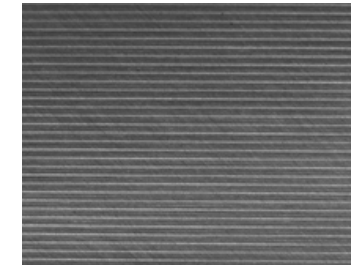


**F Sport Dark Rose**  
(F Sport and  
F Sport Performance only)

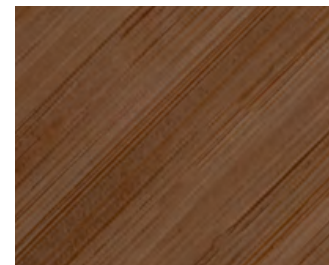
## — ORNAMENTATION



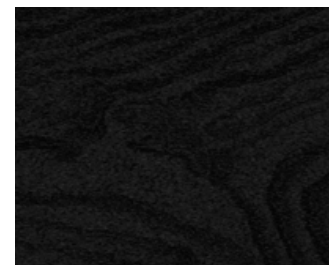
**Black Herringbone Film**  
(Luxury only)



**Aluminium**  
(F Sport and  
F Sport Performance only)



**Bamboo**  
(Sports Luxury only)



**Sumi Black**  
(Sports Luxury only)

EP = Enhancement Pack

Lexus Australia reserves the right to vary or discontinue the current interior and exterior colours, trims and colour/trim/model combinations. Colours and trims displayed are a guide only and may vary from actual colours due to printing/display process. See your Lexus dealer to confirm availability when ordering your vehicle. Overseas model shown. Australian specifications and features may differ. See your Lexus dealer for details.

## — MAIN FEATURES

		RX 350h		RX 350		RX 450h+		RX 500h
		Luxury	Sports Luxury	F Sport	Sports Luxury	Luxury	Sports Luxury	F Sport Performance
Powertrain	2.5L Petrol 4-cylinder Engine with Series Parallel Hybrid System	*	*					
	2.5L Petrol 4-cylinder Engine with Plug-in Hybrid System (PHEV)					*	*	
	2.4L Turbo Petrol 4-cylinder Engine	*	*	*	*			
	2.4L Turbo Petrol 4-cylinder Engine with Parallel Hybrid System							*
	CVT (Hybrid Front Transaxle)	*	*			*	*	
	67.5L Fuel Tank			*	*			
	55L Fuel Tank with 85km EV Driving Range <sup>1</sup>					*	*	
	65L Fuel Tank	*	*					*
	3x Drive Mode (Normal, Eco, Sport) + Custom	*	*	*	*	*	*	*
	Adaptive Variable Suspension (AVS)		*	*	*	*	*	*
	AWD (E-Four Rear Transaxle)	AWD	*	*	*	*	*	*
Interior	6-speed Automatic (Hybrid Front Transaxle)							*
	Interior Illumination (Single colour)	*				*		
	Interior Illumination (Multi colour)		*	*	*		*	*
	Auto-dimming Rear View Mirror	*	*	*	*	*	*	*
	Instrument Cluster (Base)	*						
	Paddle Shifters	*	*	*	*	*	*	*
	Tonneau Cover (Cargo)	*	*	*	*	*	*	*
	Rear Air Vents	*	*	*	*	*	*	*
	NanoeX <sup>®2</sup>	*	*	*	*	*	*	*
	Steering Wheel Switches (Button Type)	*						
	Genuine Leather Accented Shift Knob	*	*	*	*	*	*	*
	NuLux <sup>®</sup> Seat Trim	*						
	Front Tray Illumination	*	*	*	*	*	*	*
	4x Cup Holders	*	*	*	*	*	*	*
	Carpet Floor Mats	*	*	*	*	*	*	*
	Steering Wheel with Woodgrain Look Ornamentation		*		*		*	
	Heated Steering Wheel		*	EP2	*		*	*
	Sunshade on Rear Doors (Manual)		*	*	*		*	*
	Door Trims with L Shaped Emboss Pattern		*		*		*	*
	Instrument Panel with Woodgrain Look Ornamentation		*		*		*	
	Semi Aniline Leather Accented Seat Trim		*		*		*	
	Instrument Cluster (High grade)		*		*	*	*	
	Steering Wheel Switches (Touch Sensor Type)	EP1	*	*	*	*	*	*
	Leather Accented Seat Trim	EP1		*		*		*
	Driver's Seat Memory	EP1	*	*	*	*	*	*

EP = Enhancement Pack

<sup>1</sup>Results were achieved under test conditions and do not reflect the driving range in real world driving. Actual driving range can be significantly less than test driving range, depending on various factors. To learn more about how different factors can impact range, please see our FAQs [Lexus.com.au/lexus-electrified/battery-electric/faqs](https://www.lexus.com.au/lexus-electrified/battery-electric/faqs) <sup>2</sup>Product and company names are trademarks of their respective owners.



## — MAIN FEATURES CONTINUED

		RX 350h		RX 350		RX 450h+		RX 500h
		Luxury	Sports Luxury	F Sport	Sports Luxury	Luxury	Sports Luxury	F Sport Performance
Exterior	19" Alloy Wheels	•				•		
	21" F Sport Alloy Wheels			•				
	21" F Sport Alloy Wheels (with Matte Finish)							•
	21" Alloy Wheels		•		•		•	
	Acoustic Glass (Windshield, Front and Rear Side)	•	•	•	•	•	•	•
	Rear Privacy Glass	•	•	•	•	•	•	•
	Daytime Running Lamp (DRL)	•	•	•	•	•	•	•
	Shark Fin Antenna	•	•	•	•	•	•	•
	Single-projector Bi-LED (High/Low Beam) Headlamps with Auto (Static) Levelling and Headlamp Cleaners	•				•		
	3-projector Bi-LED (High/Low Beam) Headlamps with BladeScan Technology, Auto (Dynamic) Levelling and Headlamp Cleaners		•	•	•		•	•
	Exterior Mirrors Heated and Driver's Side Auto Dimming Functionality	•	•	•	•	•	•	•
	Front and Rear Fog Lamps	•	•	•	•	•	•	•
	Panoramic Roof (with Slide)	EP1	EP1 / EP2	EP1 / EP2	EP1 / EP2	•	•	•
	Cornering Lamps		•	•	•		•	•
	Aluminium Monoblock 6-piston Front Brake Callipers			•				•
	F Sport Front and Rear Bumpers			•				•
	F Sport Grille			•				•
	Black Roof Rails			•				•
	Black Mirror Caps			•				•
	F Sport Exterior Badges			•				•
	F Sport Steering Wheel			•				•
	Aluminium Pedals			•				•
	Aluminium Interior Ornamentation			•				•
Multimedia	F Sport Scuff Plates (Front)			•				•
	F Sport Seat Design			•				•
	Instrument Cluster (High Grade) with F Sport meters			•				•
	F Sport Shift Knob (Dimple Pattern)			•				•
	Mark Levinson <sup>61</sup> 21x Speaker Premium Surround Sound System (including subwoofer) with Navigation, DAB <sup>2</sup>		•	•	•		•	•
	Panasonic <sup>TM1</sup> 12x Speaker System (including subwoofer) with Navigation, DAB <sup>2</sup>	•				•		
	14" Touchscreen Display	•	•	•	•	•	•	•
	Wireless Android Auto <sup>TM3</sup> and Apple CarPlay <sup>®3</sup>	•	•	•	•	•	•	•
	2x DC12V Ports (Front and Cargo)	•	•	•	•	•	•	•
	5x USB-C Charging (2x Instrument Panel, 1x Front Box, 2x Rear)	•	•	•	•	•	•	
	1x USB-A Input (Front Box)	•	•	•	•	•	•	•
	Head Up Display (HUD)	EP1	•	•	•	•	•	•
	Wireless Phone Charger <sup>4</sup>	•	•	•	•	•	•	•

EP = Enhancement Pack

<sup>1</sup>Product and company names are trademarks of their respective owners. <sup>2</sup>Coverage dependant on vehicle location. <sup>3</sup>Requires compatible device, USB connection or Bluetooth. connection for vehicles fitted with wireless CarPlay<sup>®</sup> and wireless Android Auto<sup>TM</sup>, mobile data, network reception and GPS signal. Mobile usage at user's cost. Apps subject to change. For details see [lexus.com.au/connectivity](https://lexus.com.au/connectivity). Functionality varies depending on device. CarPlay<sup>®</sup>, iPhone<sup>®</sup> and Siri<sup>®</sup> are trademarks of Apple, Inc. registered in the U.S. and other countries. Android Auto<sup>TM</sup>, Android<sup>TM</sup> and Google Assistant<sup>TM</sup> are trademarks of Google LLC. <sup>4</sup>Only Qi-supported devices compatible. Refer to device manufacturer. May require additional purchase of accessory to support wireless charging

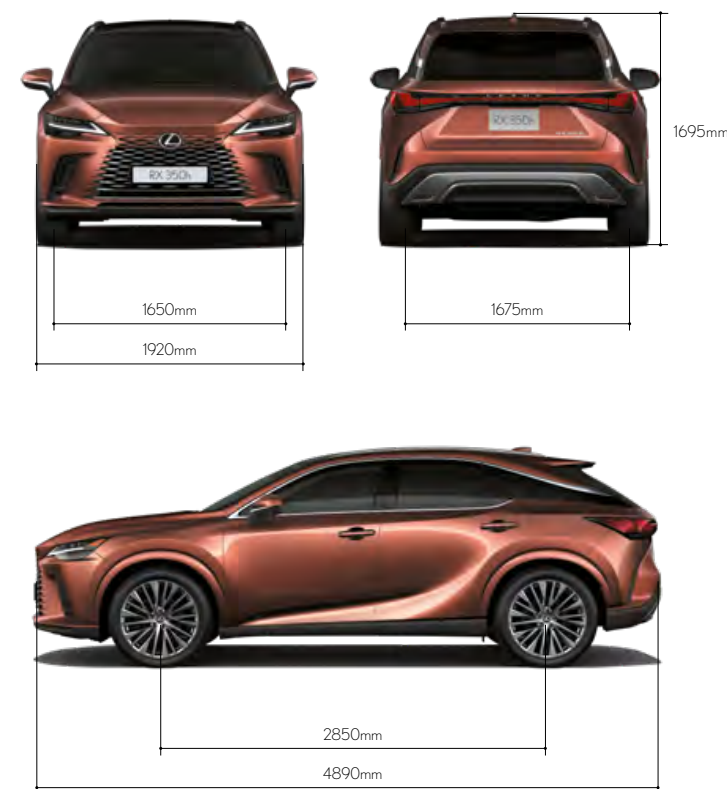
## — MAIN FEATURES CONTINUED

		RX 350h		RX 350		RX 450h+		RX 500h
		Luxury	Sports Luxury	F Sport	Sports Luxury	Luxury	Sports Luxury	F Sport Performance
Comfort and Convenience	12.3" Multi-Informational Display (MID)	•	•	•	•	•	•	•
	E-latch System (Door Lock/Unlock)	•	•	•	•	•	•	•
	Power Back Door	•	•	•	•	•	•	•
	Electrically Adjustable Steering Column	•	•	•	•	•	•	•
	Rain Sensing Wipers	•	•	•	•	•	•	•
	Electric Fuel Lid Release	•	•	•	•	•	•	•
	3-Zone Climate Control	•	•	•	•	•	•	•
	Easy-Access Entry (Steering Wheel)	•	•	•	•	•	•	•
	Heated Front Seats	•	•	•	•	•	•	•
	8-way Power Adjustable Front Seats	•		•		•		•
	10-way Power Adjustable Front Seats with Memory		•		•		•	
	4-way Power Lumbar Support on Front Seats		•		•		•	
	2-way Power Lumbar Support on Front Seats	•		•		•		•
	Smart Key Card	EP1	•	•	•	•	•	•
	Easy-Access Entry (Seat) - in addition to Steering Wheel Movement	EP1	•	•	•	•	•	•
	Ventilated Front Seats - in addition to Front Heated Seats	EP1	•	•	•	•	•	•
	Power Reclining/Folding Rear Seats		•		•		•	
	Heated and Ventilated Rear Outboard Seats		•		•		•	
	Digital Inner Rear View Mirror		EP1 / EP2	EP2	EP2		•	•
Safety <sup>1</sup>	Lexus Safety Sense + (Pre-Collision System (PCS), Lane Departure Alert (LDA), Dynamic Radar Cruise Control (DRCC) and Lane Tracing Assist (LTA))	•	•	•	•	•	•	•
	Intersection Collision Avoidance support	•	•	•	•	•	•	•
	Emergency Steering Assist (ESA)	•	•	•	•	•	•	•
	Acceleration Suppression at Low Speed	•	•	•	•	•	•	•
	Automatic High Beam (AHB)	•	•	•	•	•	•	•
	8x SRS Airbags	•	•	•	•	•	•	•
	Blind Spot Monitor (BSM) and Rear Cross Traffic Alert (RCTA)	•	•	•	•	•	•	•
	Driver Monitor Camera	•	•	•	•	•	•	•
	Vehicle Approach Notice	•	•			•	•	•
	Road Sign Assist (RSA)	•	•	•	•	•	•	•
	Emergency Brake Signal (Stop Lamp)	•	•	•	•	•	•	•
	Safe Exit Assist (SEA)	•	•	•	•	•	•	•
	Anti-Theft System (Immobiliser, Alarm, Siren, Intrusion + Tilt Sensor)	•	•	•	•	•	•	•
	Rear Seat Reminder	•	•	•	•	•	•	•
	Tyre Pressure Warning System (TPWS)	•	•	•	•	•	•	•
	Parking Support Brake (PKSB) including Front and Rear Parking Sensors	•	•	•	•	•	•	•
	Back Guide Monitor (BGM) with Cleaning	•				•		
	Panoramic View Monitor (PVM)		•	•	•		•	•
	Intelligent Parking Assist		EP2	EP2	EP2		•	•

EP = Enhancement Pack

## SPECIFICATIONS

		RX 350	RX 350h	RX 450h+	RX 500h
Dimensions and Weight <sup>1</sup> (Approximate)	Overall Length (mm)	4890	4890	4890	4890
	Overall Width (mm)	1920	1920	1920	1920
	Overall Height (mm)	1695	1695	1695	1695
	Wheelbase (mm)	2850	2850	2850	2850
	Maximum Kerb Weight (kg)	2005	1995 (2WD) 2060 (AWD)	2200	2160
	Gross Vehicle Mass (GVM) (kg)	2590	2590 (2WD) 2660 (AWD)	2780	2750
	Seating Capacity	5	5	5	5
Chassis	Suspension	Front: MacPherson Strut Type Rear: Multi Link	Front: MacPherson Strut Type Rear: Multi Link	Front: MacPherson Strut Type Rear: Multi Link	Front: MacPherson Strut Type Rear: Multi Link
	Steering System	EPS (Electric Power Steering)	EPS (Electric Power Steering)	EPS (Electric Power Steering)	EPS (Electric Power Steering)
	Brakes (mm)	Front: 18" Disc (Sports Luxury) 20" Opposed (F Sport) Rear: 18" Disc	Front: 18" Disc Rear: 18" Disc	18" Disc 38V Mid Mu	Front: 20" Opposed Rear: 18" Disc
	Minimum Turning Radius (Tyres) (m)	5.9	5.9	5.9	5.5
	Fuel Tank Capacity (L)	67.5	65	55	65
	Tyres	235/50R21	235/60R19 (Luxury) 235/50R21 (Sports Luxury)	235/60R19 (Luxury) 235/50R21 (Sports Luxury)	235/50R21
Engine	Type	Petrol	Petrol	Petrol	Petrol
	Description	2.4L Turbo Petrol 4-Cylinder Engine	2.5L Petrol 4-cylinder Engine with Series Parallel Hybrid System	2.5L Petrol 4-cylinder Engine with Plug-in Hybrid system (PHEV)	2.4L Turbo Petrol 4-cylinder Engine with Parallel Hybrid System
	Maximum Power	205/6000	140/6000	136/6000	202/6000
	Maximum Torque	430/1700-3600	239/4300-4500	227/3200-3700	460/2000-3000
	Fuel Consumption <sup>2</sup> (Combined, L/100km) Results were achieved under laboratory conditions and do not reflect the fuel consumption and/or emissions in real world driving.	8.7	5 (2WD) 5.4 (AWD)	1.3	6.5
	CO <sub>2</sub> Emission <sup>2</sup> (Combined, g/km) Results were achieved under laboratory conditions and do not reflect the fuel consumption and/or emissions in real world driving.	197	114 (2WD) 123 (AWD)	29	148
Drivetrain	Driven Wheels	AWD	2WD/AWD	AWD	AWD
	Transmission	AUTOMATIC	CVT	CVT	AUTOMATIC
Motor	Type	-	Permanent Magnet Synchronous Motor	Permanent Magnet Synchronous Motor	Permanent Magnet Synchronous Motor
	Max. Output (kW)	-	Front: 134 Rear: 40 (AWD)	Front: 134 Rear: 40	Front: 64 Rear: 75.9
	Max. Torque (Nm)	-	Front: 270 Rear: 121 (AWD)	Front: 270 Rear: 121	Front: 292 Rear: 168.5
	Total System Output (kW)	-	184	227	273
Battery and Plug-in Hybrid	Type	-	Nickel Metal Hydride	Lithium-ion	Nickel Metal Hydride
	Nominal Voltage (V)	-	259.2	355.2	288
	Total Battery Cells	-	216	96	240
	EV Driving Range (km) <sup>4,5</sup>	-	-	85	-



Weights/mass/volumes/dimensions are approximate and subject to individual vehicle variances, and should be confirmed before fitting any accessories, towing or otherwise relying on this value.

<sup>1</sup>Weights/mass/volumes/dimensions are approximate and subject to individual vehicle variances, and should be confirmed before fitting any accessories, towing or otherwise relying on this value. <sup>2</sup>Results achieved for RX 350, RX 350h, RX 450h+, RX 500h in ADR81/02 combined drive cycle fuel consumption testing. Urban cycle results achieved 11.5L/100km (RX 350), 5.3L/100km (RX 350h 2WD), 5.7L/100km (RX 350h AWD), 7.4L/100km (RX 500h) and extra urban cycle achieved 7.1L/100km (RX 350), 4.7L/100km (RX 350h 2WD), 5.2L/100km (RX 350h AWD), 6.3L/100km (RX 500h). Results produced in laboratory test conditions, using sample vehicles without fitment of accessories/customisation, and do not reflect real world driving. Figures should only be used for comparative purposes. <sup>3</sup>Results achieved for RX 350, RX 350h, RX 450h+, RX 500h in ADR81/02 combined drive cycle CO<sub>2</sub> testing. Combined cycle results achieved 197g/km (RX 350), 114g/km (RX 350h 2WD), 123g/km (RX 350h AWD), 29g/km (RX 450h+) and 148g/km (RX 500h). Results produced in laboratory test conditions, using sample vehicles without fitment of accessories/customisation, and may not be replicable. Figures should only be used for comparative purposes. <sup>4</sup>Results were achieved under test conditions and do not reflect the driving range in real world driving. Actual driving range can be significantly less than test driving range, depending on various factors. To learn more about how different factors can impact range, please see our FAQs [lexus.com.au/lexus-electrified/battery-electric#faq](https://www.lexus.com.au/lexus-electrified/battery-electric#faq). <sup>5</sup>Results achieved for RX 450h+ PHEV is based on consumption rate of 1.3L/100km using the NEDC combined drive cycle mandated by the ADR81/02 (and is the range displayed on the Energy Consumption label affixed to the car). The electric range and the energy consumption values were determined using a fully charged battery in a laboratory test and should only be used for comparative purposes. Actual driving range may vary depending on accessories fitted, battery age and condition, climate, driving style, use of heating/cooling, traffic conditions, and vehicle load. Lexus Australia uses its best endeavours to ensure material is accurate at the time of publishing. All information must be confirmed with your Lexus dealer at the time of ordering, as specifications, applicability and availability may change over time. Colours depicted are a guide only and may vary from actual colours due to the printing/display process. See your Lexus dealer for details. Lexus Australia reserves the right to change and/or discontinue, without notice, models, prices, colours, materials, equipment, specifications. To the extent permitted by law, Lexus Australia will not be liable for any damage or loss incurred from relying on the information and images contained in this material. Distributed nationally by Lexus Australia a division of Toyota Motor Corporation Australia Limited ABN 64 009 686 097. Proof: L2025-000926. Published: November 2025.